



SHARK

332 RC KONNECT

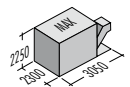
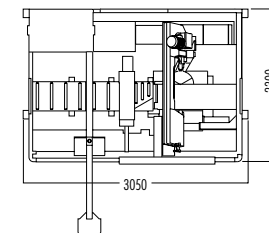
The SHARK 332 RC KONNECT band sawing machine, fully automatic and with programmable double cutting angle, maximizes safety and power for reliable performance and smart production.

- Automatic programmable double mitering band saw machine to cut any angle between -60° e +60°. The saw is powered by brushless motors and suitable to cut pipes, profiles and beams. It can also operate in semiautomatic mode.
- "Operator-free" concept: once material has been loaded on the saw, positioning of vices and saw head is done in automatic according to material size. This minimize the operator's programming and intervention times.
- Programmable automatic rotation of the saw head between -60° and +60° for symmetrical and asymmetrical cuts with brushless motor, which allows precise control in speed, torque and position.
- Powered outfeed guide to drive all the pieces cut, out of the saw.
- Pre-set cutting parameters according to geometry and type of material selected from the material library in the control.
- Saw head powered by servo motor, mounted on dual post and linear guides with pre-loaded ball bearings granting a continuous check and correction of cutting parameters in real time.



OPTIONALS FROM PAG 27 - N° 01 - 03 - 21 - 22 - 25 - 29 - 47 - 59

m/min	kW	kW	mm		mm	mm	mm	mm	kg	kW	l	kW	l	mm
15÷100	2.2	3.0	3770x27x0.9	0°	310	300	330x300	230x310	2800	1,1	70,0	2x0,15	140	330
				+45°	250	230	250x130	220x300						
				+60°	160	155	160x80	140x290						
				-45°	200	180	200x160	130x280						
				-60°	130	110	140x80	40x250						





- Self regulation in real time of head down feed rate through brushless motor.
- Double vice for optimal bar management: the movable vice automatically positions itself according to the programmed cutting angles, reducing the machine set-up times; the fixed vice hold the material by clamping it properly once been fed.
- "Modular feeding system with 1500 mm stroke (repeatable to cut at any length); the rigid steel gantry structure and the brushless motor with transmission by pinion and helical teeth rack guarantee an accurate and precise positioning. It is possible to extend the stroke of the feeder to 3000 mm or 4500 mm. (OPTIONAL).
- Electronic transducer for blade tensioning, which guarantees a higher cutting precision and longer blade life.
- Electronic inverter for infinite variable band saw blade speed (from 15 to 100m/min).
- Latest generation hydraulic control unit, with high efficiency and low energy consumption.
- Structure in grey cast iron G25, reducing drastically vibrations, grant a better stability and longer blade life.
- Mechanical driven blade brush keeps the blade gullets clean, helping to maximize blade

- performance and life.
- Coolant flood underneath rotating table to wash away metal chips.
- Designed for safety with "saw-in-a-box" style.
- Great accessibility to the saw either for set-up and maintenance and excellent visibility from any side.
- Panel PC control installed on an articulated arm to be easily moved, ensuring to control all commands in every operating position.
- Panel PC control, Quad core 2.0 GHz, 8 GB Ram, WINDOWS 10 and 17" touchscreen display with user-friendly graphic interface, which supports the operator in the preparation, optimization and processing of machining orders.
- Programmable plc up to 9999 different jobs which can be made in sequence.
- Remote service minimizes downtime and service costs.
- IOT - INDUSTRY 4.0 Ready.
- MES (optional)
- Machine preset for being handled by lift truck.
- Bi-metal band saw blade for solids and profiles.
- Keys, manual of instructions and for ordering spare parts.

