

TIGER 352 SX EVO

The best semi-automatic circular sawing machine to facilitate the work in the workshop



- SEMI-AUTOMATIC SAW
- ELECTRO-PNEUMATIC
- CIRCULAR BLADE
- FOR CUTTING FROM -45° TO $+60^{\circ}$.

CUTTING RANGE

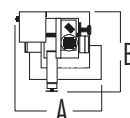
	○	□	▭	■	▬
0° / mm	115	95	180 x 95	90	-
+45° / mm	110	95	125 x 95	-	64 x 90
+ 60° / mm	90	80	90 x 95	-	45 x 90
- 45° /mm	110	95	125 x 95	-	64 x 90
Max. open vice	190 mm				

PERFORMANCE CHARACTERISTICS

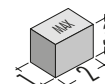
Blade size	HSS - 350 x 32 x 2.5 mm
Blade speed	15/30/45/90 rpm
Blade motor	1.8/ 2.6 Kw
Capacity of coolant tank	20 L
Total input power	3.1 Kw

WEIGHT AND DIMENSIONS

Height of working table	950 mm
Weight	425 kg



A = 1140 mm
B = 1035 mm



1 = 1050 mm
2 = 1120 mm
3 = 2050 mm