

# TIGER 352 NC 5.0

The super compact circular sawing machine for the cut of metals that has always distinguished for its strength and accuracy



- AUTOMATIC SAW
- ELECTROPNEUMATIC
- CIRCULAR BLADE
- FOR CUTTING FROM -45° TO +60°.

It is also equipped with semi-automatic cycle.

## CUTTING RANGE

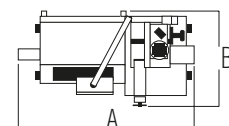
	∅	○	□	▭	▭	●	■	▬
0° / mm	350	115	95	180x95	-	90	90	-
+45° / mm	350	110	95	125x95	-	64	64	64x90
+60° / mm	350	90	90	90x90	90x95	45	45	45x90
- 45° / mm	350	110	95	125x95	-	64	64	64x90
Max. open vice	190 mm							
Rest piece no longer feeded - standard	320 mm							
Minimum cutting length	10 mm							
Cutting capacity with overhead bundling	70x70 mm							
Rest piece no longer feeded with vice to reduce restpiece	170 mm							

## PERFORMANCE CHARACTERISTICS

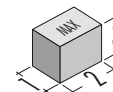
Circular blade size	HSS 350x32x2.5 mm
Blade speed	12÷40 / 36÷120 rpm
Blade motor	2.6 Kw
Infinite blade speed	3.0 Kw
Max. stroke feeding vice	600 mm
Speed of feeding vice	4.5 m/min
Max weight that the feeding vice can pull	1360 Kg
Capacity of coolant tank	20 L
Total input power	3.005 Kw

## WEIGHT AND DIMENSIONS

Height of working table	950 mm
Weight	680 kg



A = 2150 mm  
B = 1300 mm



1 = 1200 mm  
2 = 1920 mm  
3 = 2200 mm