

PH 262 HB

The small pull-down manual double mitering band sawing machine ideal for the cut of tubes and metal profiles and characterized by high performance. It can work with or without operator.



□ **MANUAL SAW**

□ **BAND BLADE**

□ **CUTTING FROM -45° TO +60°**

- The HB device allows to perform single cuts without operator intervention by using the operating head weight controlled by an hydraulic circuit and valve.

- The HB device can be provided as a KIT to install in already manufactured machines.

- HB device is available only in three-phase version.

CUTTING RANGE

| | ○ | □ | ▭ |
|----------------|--------|-----|-----------|
| 0° / mm | 225 | 200 | 240 x 160 |
| +45° / mm | 160 | 140 | 155 x 115 |
| +60° / mm | 90 | 90 | 90 x 90 |
| - 45° / mm | 145 | 125 | 150x100 |
| Max. open vice | 245 mm | | |

PERFORMANCE CHARACTERISTICS

| | |
|-------------|--------------------|
| Blade size | 2450 x 27 x 0.9 mm |
| Blade speed | 46 - 92 m/min |
| Blade motor | 0.70 / 0.81 Kw |

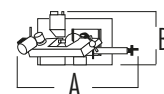
Capacity of coolant tank 15 L

Total input power 0.91 Kw

WEIGHT AND DIMENSIONS

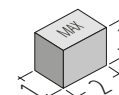
Height of working table 950 mm

Weight 265 kg



A = 1580 mm

B = 710 mm



1 = 800 mm

2 = 1400 mm

3 = 1650 mm